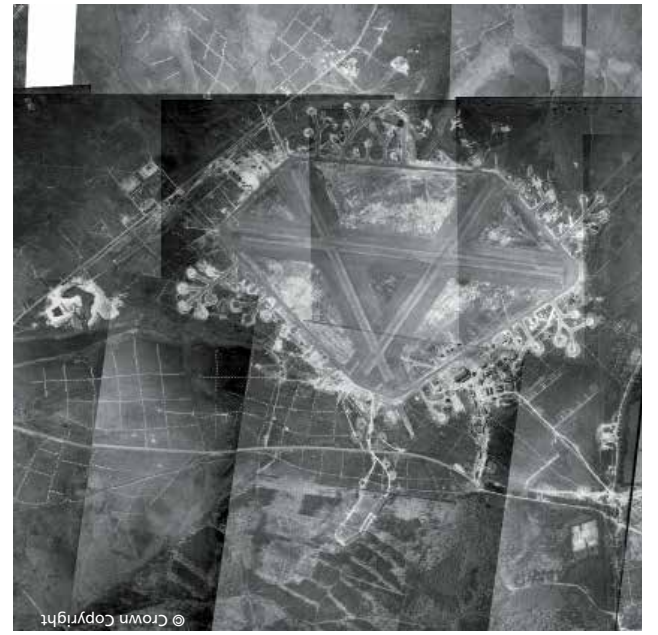



Aerial view of RAF Beaulieu taken by the RAF in 1946



The interactive portal is an engaging online archive, recording important sites and activities in the New Forest during World War II.

The New Forest Remembers project has brought together information from public and private collections for the first time and captured it digitally. The portal gives open public access to this information so anyone can read, see and hear their local history – often told by the people who experienced it first-hand.

 Interactive portal



Land Girls hay making

To access the portal visit: www.newforestnpa.gov.uk/wwii



Water colour of Setley POW Camp entrance

The interactive portal is a searchable online archive of wartime New Forest material. The picture is still incomplete, and anyone with information, photographs or documents is welcome to add their piece of the puzzle.

Register with the portal to help grow its archive, comment on existing material and upload your own information and family history relating to the New Forest.

Get involved!

The strategic location of the New Forest on the south coast meant that it played a vital role in World War II. As this time moves to the fringes of living memory, it has become increasingly important to obtain first-hand information about its impact on the New Forest and store those stories for future generations.

The interactive portal is your gateway to this information, and an opportunity to add your knowledge to the emerging picture.

Operation Overlord Administrative Map, 1944




Jungle training in Brockenhurst



On-board HMS Bulolo during the King's secret visit

Follow the Spitfire!

Visit www.newforestnpa.gov.uk/wwii

 Interactive portal

A Handley Page Halifax of No. 295 Squadron RAF at Holmsley South



© IWM (CH10434)

New Forest Remembers

Follow untold stories of World War II online



© IWM (TR212)

New Forest Remembers




untold stories of World War II

Contact us

New Forest National Park Authority, Lymington Town Hall, Avenue Road, Lymington, Hampshire SO41 9ZG
 Phone: 01590 646600
 E-mail: archaeology@newforestnpa.gov.uk

www.newforestnpa.gov.uk



Supported by    Front Cover: Squadron leader instructs Churchill tank commanders of A Squadron at Wilverley Plain and Longslade Bottom, August 1942

© New Forest National Park Authority. Printed on FSC environmentally-friendly paper. 00181, April 2014

The interactive website; a multimedia journey into the New Forest during World War II.

**What will you discover?
 ...What will you add?**



New Forest Remembers

untold stories of World War II



Follow the Spitfire!

Visit www.newforestnpa.gov.uk/wwii



Oral History

Listen to recollections and memories of those that lived, worked and played here during World War II. What will you hear next?



Arthur Poore DFC Bomber pilot

'I flew in quite happily, this was about eleven o'clock at night, but of course there were dozens of aircraft following me.'



Betty McCarthy

'You were restricted, you couldn't leave a job once you were in it without permission, I had to beg the manager to release me.'

Betty McCarthy Young teenager



Freda Jones

'When the air raid sirens went we had to drop everything and just run up to the air raid shelters. Sometimes we were there quite some time, and then the siren would go so then we'd go back down to school again.'

Freda Jones School girl

Film

See archive footage of secret tests and war time life in the Forest.



Documents

Read and download documents from national, regional and local archives as well as those offered by the general public. Many were previously Top Secret and have only recently been released. Create your own replica World War II documents.



Emergency food rations



Secret routes patrolled by the Home Guard

Photos

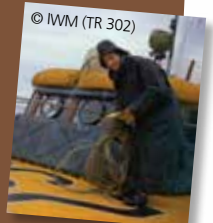
See landing craft en route for the D-Day invasion, Eisenhower visiting a New Forest airfield, Land Army girls working the fields near Ringwood and Home Guard on parade. What will you see next?



General Dwight D Eisenhower at Stoney Cross



LCT 574 en route for Normandy



WAAF inspecting kit on a new launch



Land Girls pea picking near Ringwood



Home Guard on parade, Lynton



Tanks on exercise at Wilverley Plain and Longslade Bottom

Where can I visit?

Camps, decoys and secret testing sites are just some of the locations you can visit in the New Forest where you can still see the remains of World War II. Have you stumbled over some concrete when out walking? See if it's a World War II relic. What will you discover next?



Bomb preparation area at RAF Beaulieu



The remains of Yew Tree Heath Heavy Anti-Aircraft Gun site

Have your say

Register and log in to add your thoughts, comments, family stories, recollections and memories of being in the New Forest during World War II.

The interactive portal can accept text and images from users but if you have audio and/or video you want to share, email archaeology@newforestnpa.gov.uk



Available for android and apple
Search www.wwii.app on the portal for more information